

FROM

\$260 /NIGHT

St Helens Beachfront

Sultana Point

 Sleeps: 6

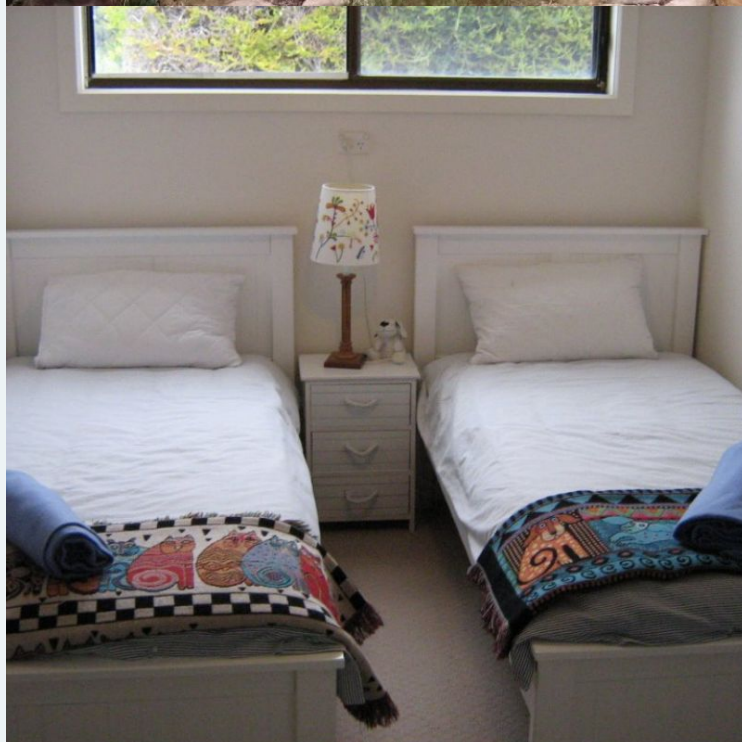
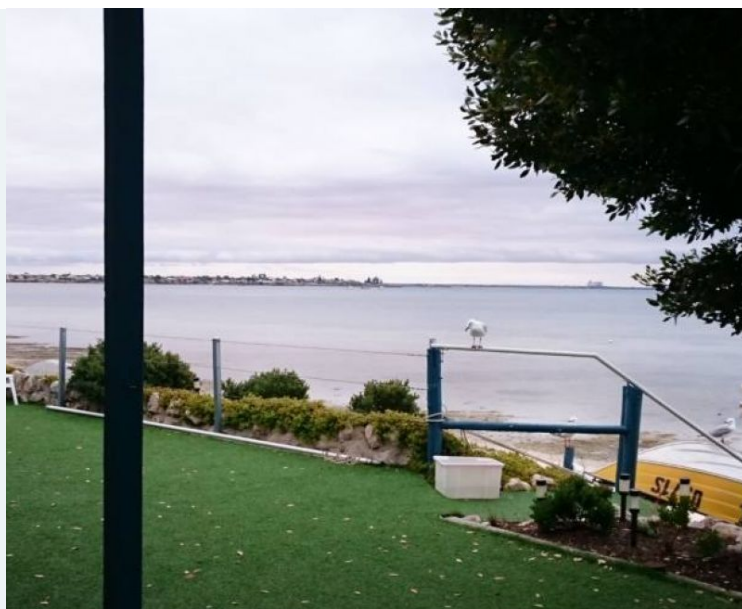
 Bedrooms: 3

 Bathrooms: 1

 Parking spots: 2

Features:

- 2 queen sized beds
- 2 single beds
- Airconditioning
- DVD player
- Pet friendly
- TV
- Washing Machine



Book online now



* Price and property details correct as at 29/04/2025 and subject to change.

St Helens Beachfront, Sultana Point

Book online now



Overview

St Helens Beachfront is situated in prime beachfront position at Sultana Point, just seven steps off the deck to the sand.

Beachfront is bound to exceed your expectations!

A north facing beach house, it is well equipped with quality leather furnishings and fittings throughout. St Helens Beachfront sleeps up to six guests in three bedrooms. There are 2 queen beds and two single beds, guests just need to bring all of their own linen. Pillows and quilts are provided.

The accommodation features reverse cycle air conditioning.

The modern kitchen has quality saucepans, cutlery and crockery, a microwave, under bench electric oven and gas cooktop, and a large refrigerator/freezer.

There is also a bathroom with shower and toilet (no bath), a television with DVD, CD/Radio player and a games cupboard for kids with puzzles, games and cricket bats and balls for guest use.

Relax on the rear deck or on the front deck with an outdoor dining setting & large four burner barbecue overlooking the beach and water.

There is off street parking with room for a car and boat with a mooring out front. Front loader washing machine, dryer and retractable clothes line.

Sultana Point is a 5 minute drive from Edithburgh St Helens

* Price and property details correct as at 29/04/2025 and subject to change.